

STONE



Pendleton Road RH1

Guide price: £550,000 to £575,000

“At Stone, we’re passionate about the unique and awe-inspiring architectural elements that transform houses into dream homes.”

————— *The Stone Family*



Guide price: £550,000 to £575,000.

Designed with generous proportions, broad windows and a focus on natural light, homes built during the late 1960s continue to be sought after by those who appreciate space that simply works. The Crescent is a wonderful example of this era, tucked away within an exclusive mews-style development of just nine homes, where curved terraces wrap around a central green to create a setting that feels both private and neighbourly.



This beautifully presented home immediately captures that timeless appeal. The property is surrounded by beautifully maintained communal gardens, and its distinctive façade pairs crisp white render with traditional red brick, softened by a welcoming porch and elegant box bay window. Inside, the entrance hall offers a practical pause, complete with a downstairs cloakroom, before opening into the heart of the home.

The living space has been thoughtfully arranged to make the most of its generous footprint and dual-aspect design. Natural light moves effortlessly from front to back throughout the day, while the box bay window frames the sitting area around an attractive fireplace, creating a cosy place to gather on winter evenings. Beyond, the dining area enjoys peaceful views across the garden, making everyday meals and entertaining equally inviting.



The kitchen is classically designed, with integrated appliances and direct access outside, allowing indoor and outdoor living to blend with ease during the warmer months.

Outside, the garden feels wonderfully established. Colourful planting softens each seating area, while a generous lawn offers plenty of room to enjoy the sunshine. Beech hedging provides privacy without feeling enclosed, and the patio becomes an obvious spot for a leisurely morning coffee or an afternoon spent with a good book.

Upstairs, the home's generous proportions continue. Two spacious double bedrooms benefit from built-in wardrobes and both enjoy leafy, green outlooks that reinforce the peaceful setting. The third bedroom remains a comfortable and versatile room, ideal as a nursery, guest bedroom or home office. Completing the first floor is a well-appointed family bathroom with both a separate bath and shower. Throughout, the interiors have been beautifully maintained, with a calm, neutral palette that allows the quality of the home to speak for itself.







Life at The Crescent enjoys the best of both worlds. Positioned in Meadvale, one of Redhill's most desirable residential pockets, the development sits almost perfectly between Redhill and Reigate, giving residents easy access to two thriving town centres while retaining a distinctly peaceful atmosphere.

Nature is never far from the doorstep. Earlswood Common and Redhill Common unfold directly opposite the development, offering acres of woodland, open heath and scenic walking routes, while the much-loved Earlswood Lakes are just a short stroll away — a favourite destination for dog walks, morning runs or simply enjoying the changing seasons.

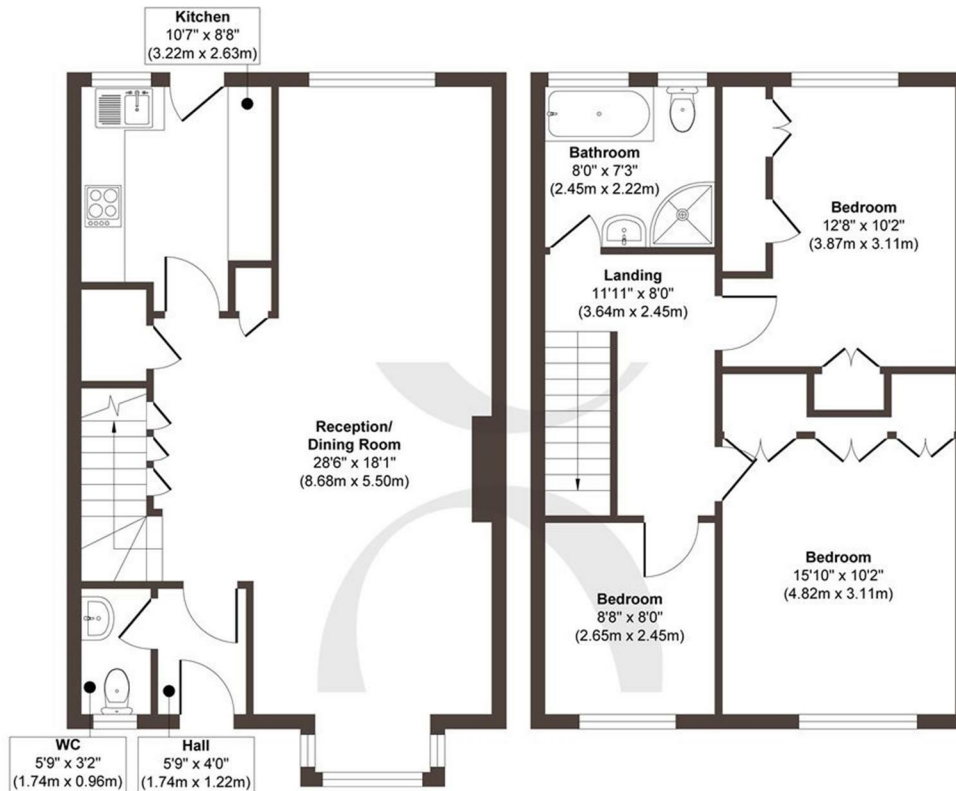
Families are particularly well served, with a selection of highly regarded schools nearby, including Meadvale Primary School, St John's Primary School, Earlswood Infant and Nursery School, Earlswood Junior School and Reigate School, while independent options including Dunottar School and Reigate St Mary's are also within easy reach. Commuters benefit from nearby Redhill, Reigate and Earlswood railway stations, providing regular services to London, Gatwick and the South Coast, while local shops, cafés and everyday amenities are all conveniently close by.







The Details



Ground Floor
Approximate Floor Area
544 sq. ft
(50.57 sq. m)

First Floor
Approximate Floor Area
530 sq. ft
(49.30 sq. m)

Approx. Gross Internal Floor Area 1074 sq. ft / 99.87 sq. m

Illustration for identification purposes only, measurements are approximate, not to scale.

Produced by Elements Property

STONE

- Attractive late 1960s architecture with spacious proportions
- Traditional windows flood the interiors with natural light
- Beautifully presented interiors in a timeless, neutral palette
- Dual-aspect open plan living and dining room
- Traditional kitchen with integrated appliances and garden access
- Beautiful rear garden with colourful planting, lawn and patio
- Downstairs cloakroom, and first floor family bathroom
- Dedicated private off-street parking space, guest parking, and en-bloc garage for additional storage
- Exclusive curved mews-style development of just nine homes
- Neighbouring the common, with leafy outlooks to both the front and rear

Energy Performance Certificate (EPC)

Band C

Council Tax Band

E



STONE

Let's Talk

01737 301 557

hello@stoneestateagents.co.uk

stoneestateagents.co.uk

The particulars above are a guide, not an offer or contract. Descriptions photographs and plans are not statements or representations of fact. Measurements are approximate and not to scale. Prospective purchasers must verify the accuracy of the information within the particulars. Stone does not give any representations or warranties; nor represent the Seller legally. Stone has no liability, for any costs, losses or expenses incurred by the Seller or a prospective buyer relating to the sales and buying transaction. Our Sales Disclaimer, trading names and privacy policy on how your data is processed and used is found in full on our website in our Privacy Statement.

© Stone Estate Agents 2023 All rights Reserved